



## SOCIAL AND ROMANTIC RELATIONSHIPS DURING THE PANDEMIC

In secondary three (9<sup>th</sup> grade) and four (10<sup>th</sup> grade) adolescents who participated in the study between May 1<sup>st</sup> and June 30<sup>th</sup>, 2020

### Frequency at which respondents kept in touch with their friends



IN-PERSON contact



VIRTUAL contact

9,9 % saw each other EVERY DAY

61,0 % contacted each other EVERY DAY

61,4 % saw each other EVERY WEEK

31,6 % contacted each other EVERY WEEK

23,6 % saw each other ONCE TO SEVERAL TIMES A MONTH

5,9 % contacted each other ONCE TO SEVERAL TIMES A MONTH

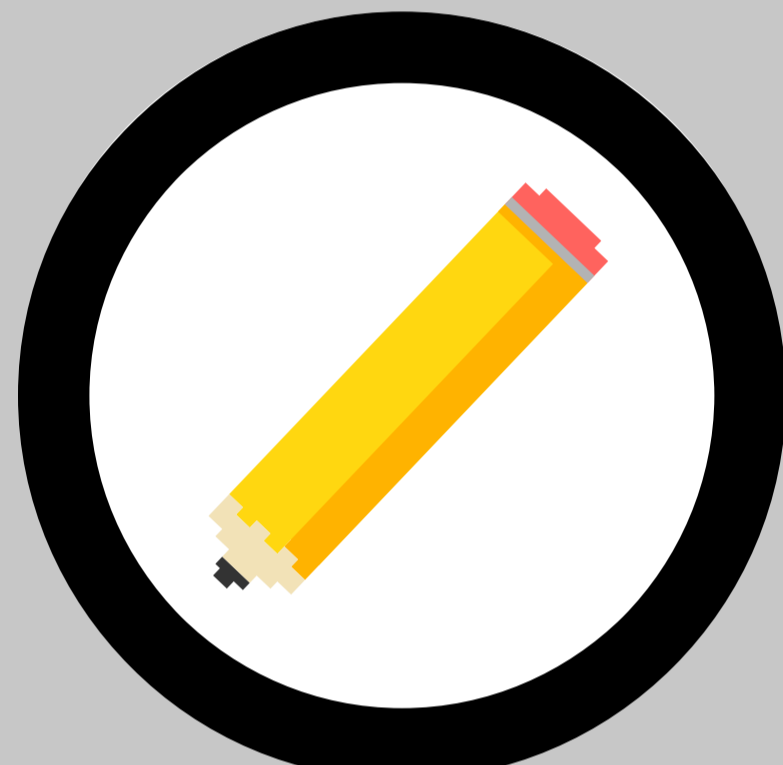
5,0 % saw each other LESS THAN ONCE A MONTH

1,6 % contacted each other LESS THAN ONCE A MONTH

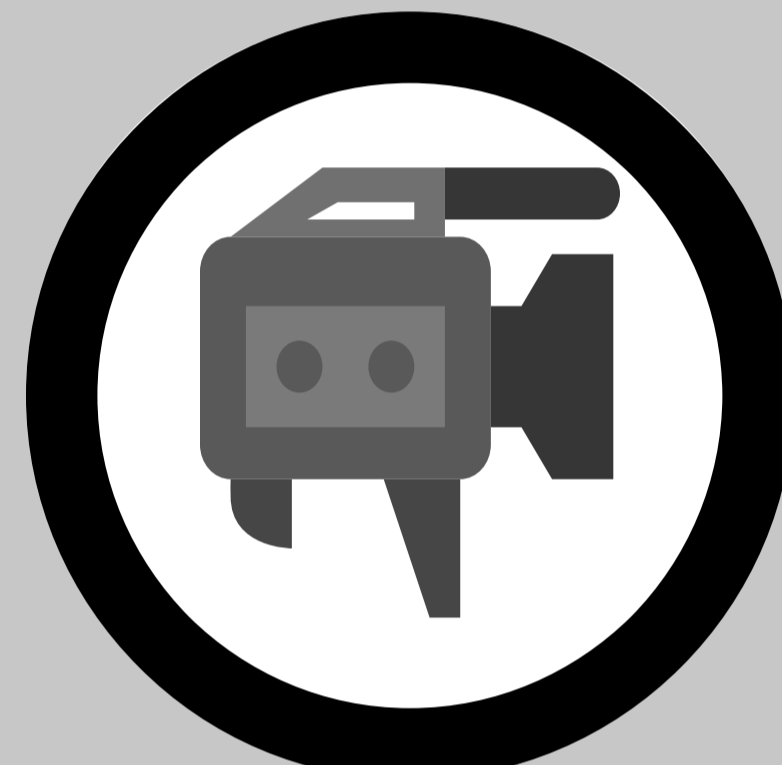
### Strategies used by students to keep in touch with their friends during the pandemic



35,8 % of adolescents saw each other in person



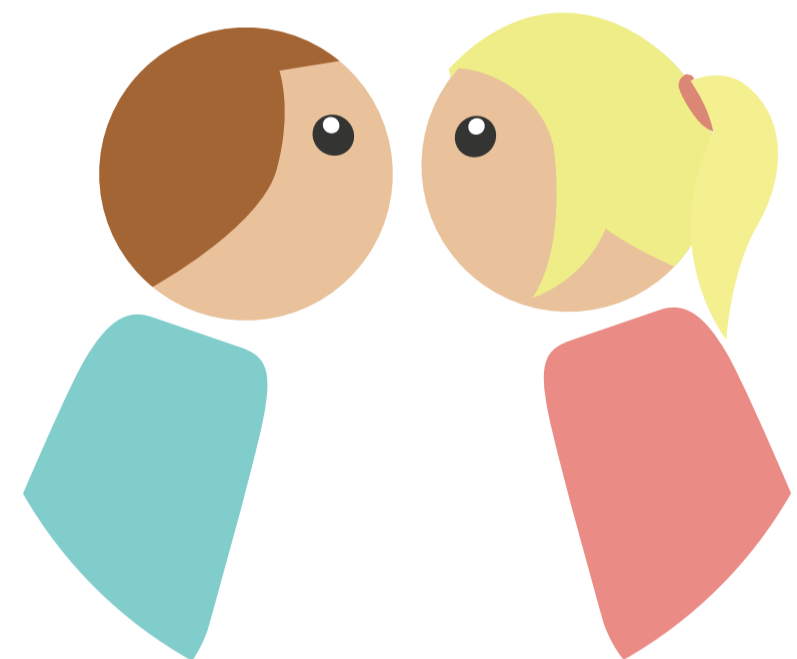
82,3 % of adolescents communicated in writing



67,8 % of adolescents spoke through video



30,7 % of adolescents spoke through telephone



64,2 % of adolescents in a couple/dating saw their romantic partner IN PERSON between May and June 2020

71,5 % of adolescents in couple/dating communicated with their romantic partner IN WRITING between May and June 2020

60,0 % of adolescents in couple/dating communicated with their romantic partner THROUGH VIDEO between May and June 2020

34,5 % of adolescents in couple/dating communicated with their romantic partner THROUGH TELEPHONE between May and June 2020

The data from this infographic comes from the second phase of the study on youth's sexual and romantic relationships (PRESAJ) and the study on the Impact of adolescent participation in sports (IPSA) carried out in Quebec between **May and June 2020** with 674 adolescents in secondary three (9<sup>th</sup> grade) and four (10<sup>th</sup> grade). The PRESAJ study is led by Sophie Bergeron, Ph.D. from the Université de Montréal and Jacinthe Dion, Ph.D. from the Université de Québec à Chicoutimi, and it is funded by the Canadian Institutes of Health Research (CIHR). The IPSA study is also led by Jacinthe Dion, Ph.D. and is partly funded by the Social Sciences and Humanities Research Council (SSHRC).

#### To cite this document

Clermont, C., Bergeron, S., Attard, V., Dubois-Bouchard, C., Tremblay, V. & Dion, J. (2020). *Social and romantic relationships during the pandemic*. Information sheet: Knowledge transfer campaign of the PRESAJ Study and the IPSA Study. Université de Montréal et Université du Québec à Chicoutimi.



@etude\_presaj



facebook.com/etudepresaj

